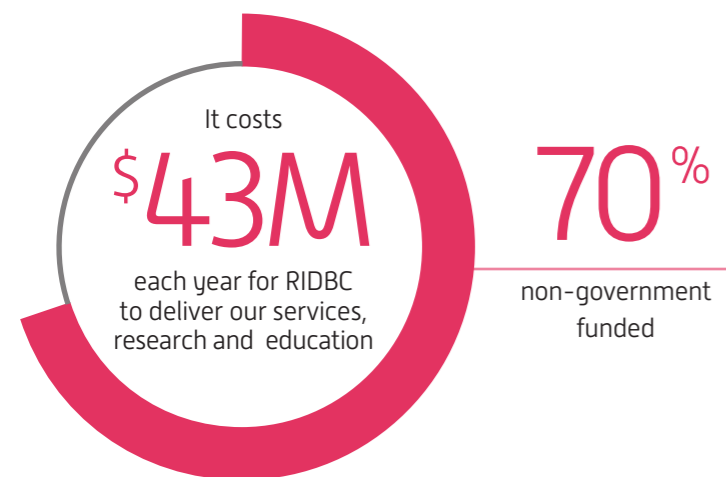


WHAT IS RIDBC?

RIDBC (Royal Institute for Deaf and Blind Children), is Australia's largest non-government provider of education, therapy and cochlear implant services for children and adults with vision or hearing loss, their families, and the professionals who support them.



It costs \$43 million each year for RIDBC to deliver our vital services to children who need us.

Only 30% of our funding is provided by the government. The rest comes from the generosity of the community, including individuals and businesses.

The range of services provided by RIDBC is unique in Australia, supporting over 8,000 people who are deaf, hard of hearing, blind or have vision impairment and the professionals who support them.

- Early intervention programs to give children the best start in life
- Specialist education programs and school support services to allow children to reach their full potential
- Specialist services for children who are deafblind or have additional disabilities
- Australia's largest cochlear implant program, including therapy and support services
- Regional and remote services, including our Indigenous Outreach Program and RIDBC Telepractice reaching regional communities.
- Language programs for both spoken English and Auslan (Australian sign language)
- Literacy programs including braille, and other printed and digital resources to prepare children for mainstream schooling
- Multimedia applications, and provision of access technology, designed in-house, to support independent learning
- Therapy and allied health services delivered by a broad range of specialist health professionals e.g. Speech pathologists, Ophthalmologists, Psychologists, Audiologists, and more.

RIDBC services are underpinned by our world class research programs, continuing professional education courses, and postgraduate courses run by RIDBC Renwick Centre for professionals working with children with vision or hearing loss.

RIDBC

Royal Institute for Deaf and Blind Children



For more information, contact:
Corporate & Community Partnerships Executive
Carol Hanna
carol.hanna@ridbc.org.au
02 9872 0326

unli'mited SCHOOL FRIEND

Be part of a collective of schools lifting the limits for children with vision or hearing loss

proudly supporting

RIDBC

Royal Institute for Deaf and Blind Children

unli'mited WAYS TO SUPPORT US

We are looking for schools to become an **unli'mited** School Friend with the Royal Institute for Deaf and Blind Children (RIDBC). We are inviting your school to work with us towards a common goal – ensuring that no child with vision or hearing loss gets left behind – to give all children equal access to communication, education, literacy, therapy and health services, that will enable them to live a life where nothing holds them back.

Together, we will change the lives of thousands of Australian children, where they will be able to live a life unli'mited and achieve their dreams.

Over the course of more than 150 years, RIDBC has continued to be a leader in providing services to people with vision or hearing loss with 20 sites across Australia and through high quality videoconferencing to remote and regional locations. We support over 8,000 people with our expert vision and hearing services and education programs.

Over the years, RIDBC has provided a range of relevant education to children with vision and hearing loss, reflecting changes in philosophy of education for children with disabilities.


Today, we provide education through our specialist schools for children with vision or hearing loss.




OUR GOAL IS TO 'DO MORE FOR THOSE WHO NEED US MOST'

HOW YOU CAN HELP

By becoming an **unli'mited** School Friend your support will enable RIDBC to work with thousands of children across Australia to provide a wide range of education and specialist services; ensuring children who have vision or hearing loss have the very best opportunities in life and have the tools to achieve their dreams. Your school can easily help with any one of these ideas or if you already hold events throughout the school year, add on a fundraising element to it. We will support you every step of the way.

 Here are a few ideas:

- Mufti Day – you could organise a Crazy Hair Day, Crazy Sock Day or Wear your School Colour Day
- Morning Tea or Picnic Lunch
- Book & Cake Stall
- Awareness Day
- Auslan Spelling Bee
- Trivia or Movie Night
- School Disco

 After you have chosen your fundraising event, all you need to do now is:

1. Let us know. Give us a call or email us and we will send you the registration form
2. Read through the guidelines and register your event
3. Read through your fundraising guide, and choose your event date
4. Start promoting and fundraising

THE BENEFITS

The benefits to your school and students is **unli'mited**. Providing and supporting education is at the core of what we do, but becoming an **unli'mited** School Friend, you will be helping us to not only raise vital funds, you will also be educating your students about disability awareness and helping them to develop understanding, acceptance and inclusion.

Through fundraising for RIDBC, students will develop specific skills in line with the *National Framework for Values Education in Australian Schools* including:



Self-awareness and awareness of children with vision or hearing loss and their needs



Empowerment, gratitude, understanding and tolerance



Leadership and collaboration skills



Fulfilment in supporting other students just like them



Compassion, respect, fulfilment and pride

HOW WE CAN HELP YOU AND YOUR STUDENTS

RIDBC would be honoured to have your school and students as our **unli'mited** School Friend.

We will be there to offer assistance, guidance and support. We will make it as easy as possible for your teachers and students, and provide everything that you need, this includes:



Providing you with a full fundraising 'how to kit' filled with unique and engaging fundraising ideas and how to roll them out



Volunteer opportunities with our students at one of schools – includes a BBQ lunch



We can come and host a 'Learn Auslan (sign language)' classes and 'How to Read Braille in class' lessons at your school



We can come and speak at your assembly about RIDBC



Support just a phone call away

Become unli'mited School Friend and help us do more for those who need it most – together the sky will be their only limit!

For more information on any of these options, or to book in a meeting with our Corporate and Community Team, contact: **Carol Hanna, Corporate & Community Partnerships Executive** on **02 9872 0326** or **carol.hanna@ridbc.org.au**